

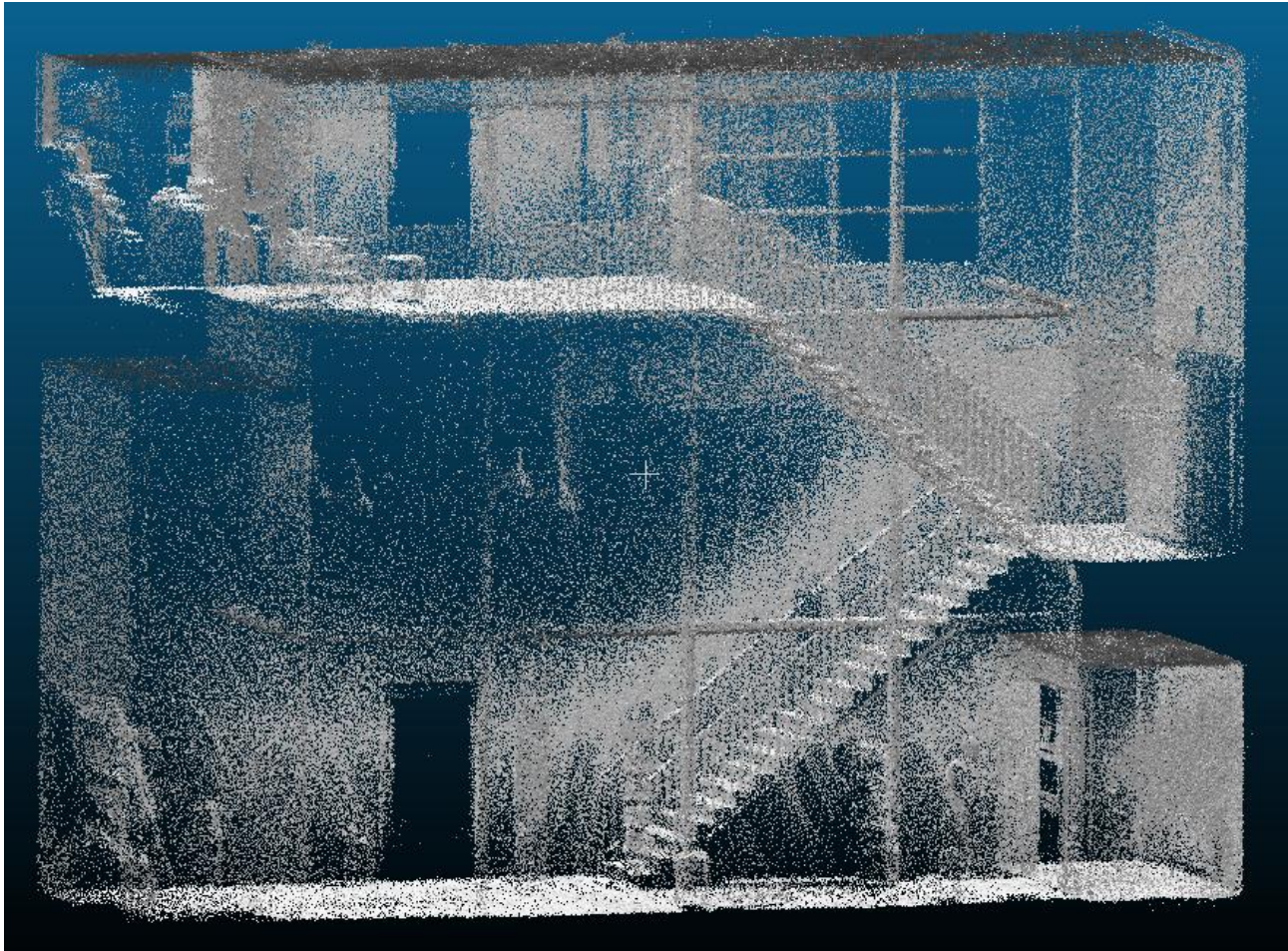
Automatic space subdivision for multi-story pathfinding on a 3D point cloud using an octree

F.W. Fichtner, 2016-02-23

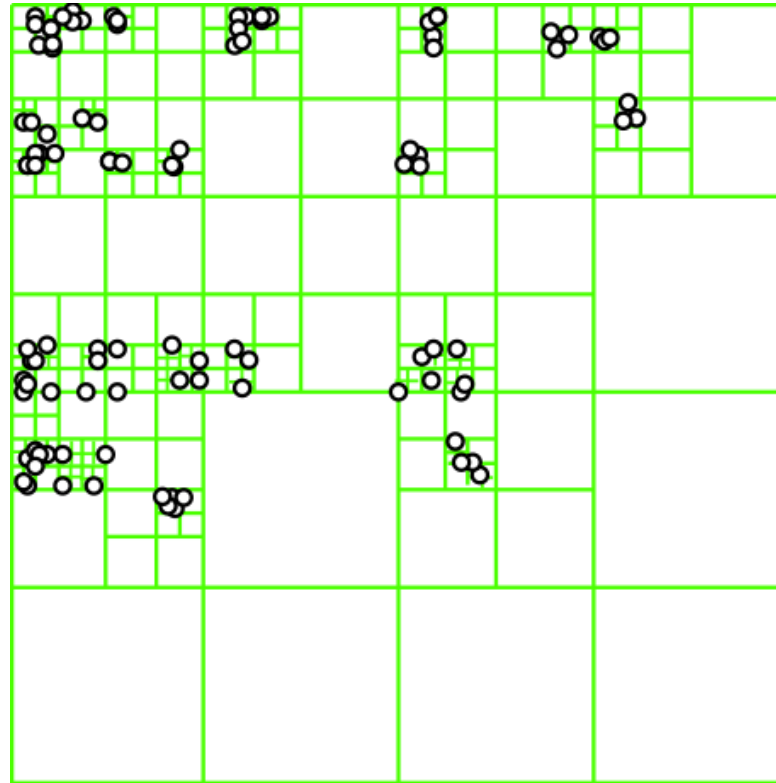
f.w.fichtner@student.tudelft.nl



ZEB1 point cloud *Fire Brigade in Berkel en Rodenrijs*



Octree



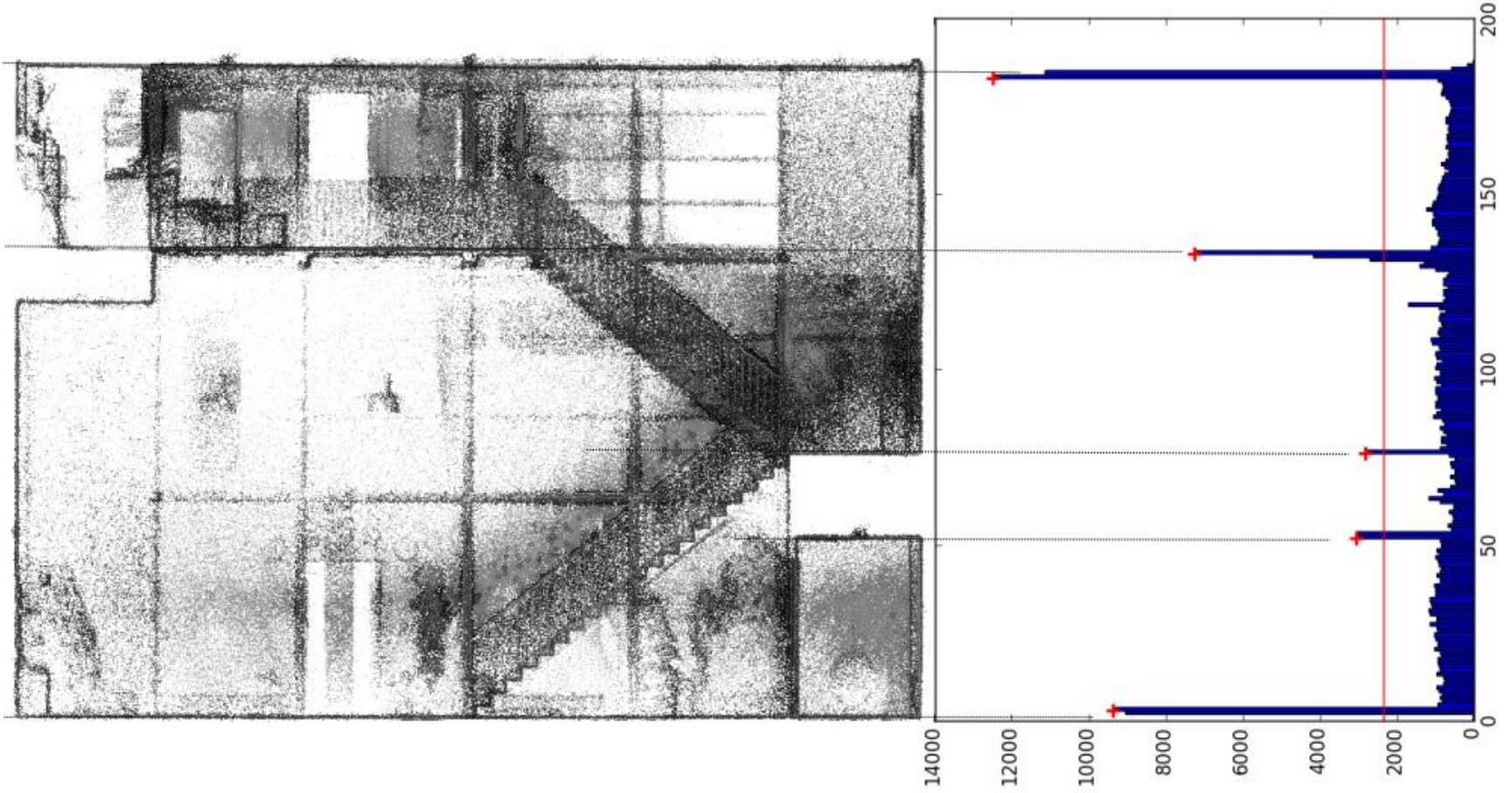
Reconstruction for pathfinding

1. Subdivide and semantically enrich the structure
2. Derive pathfinding network
3. Match model with localizer

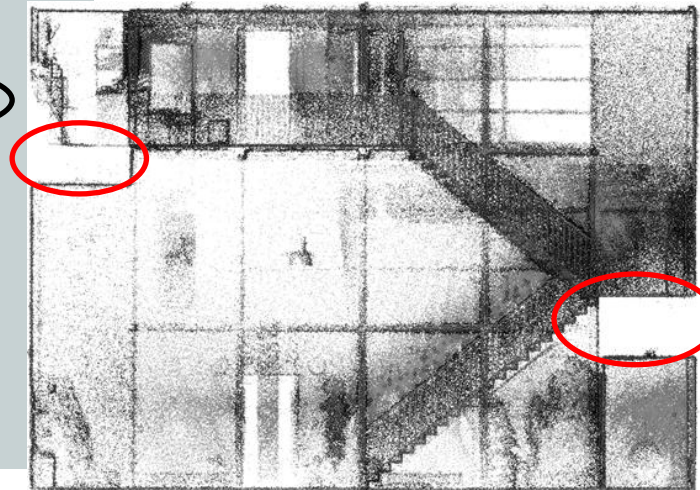
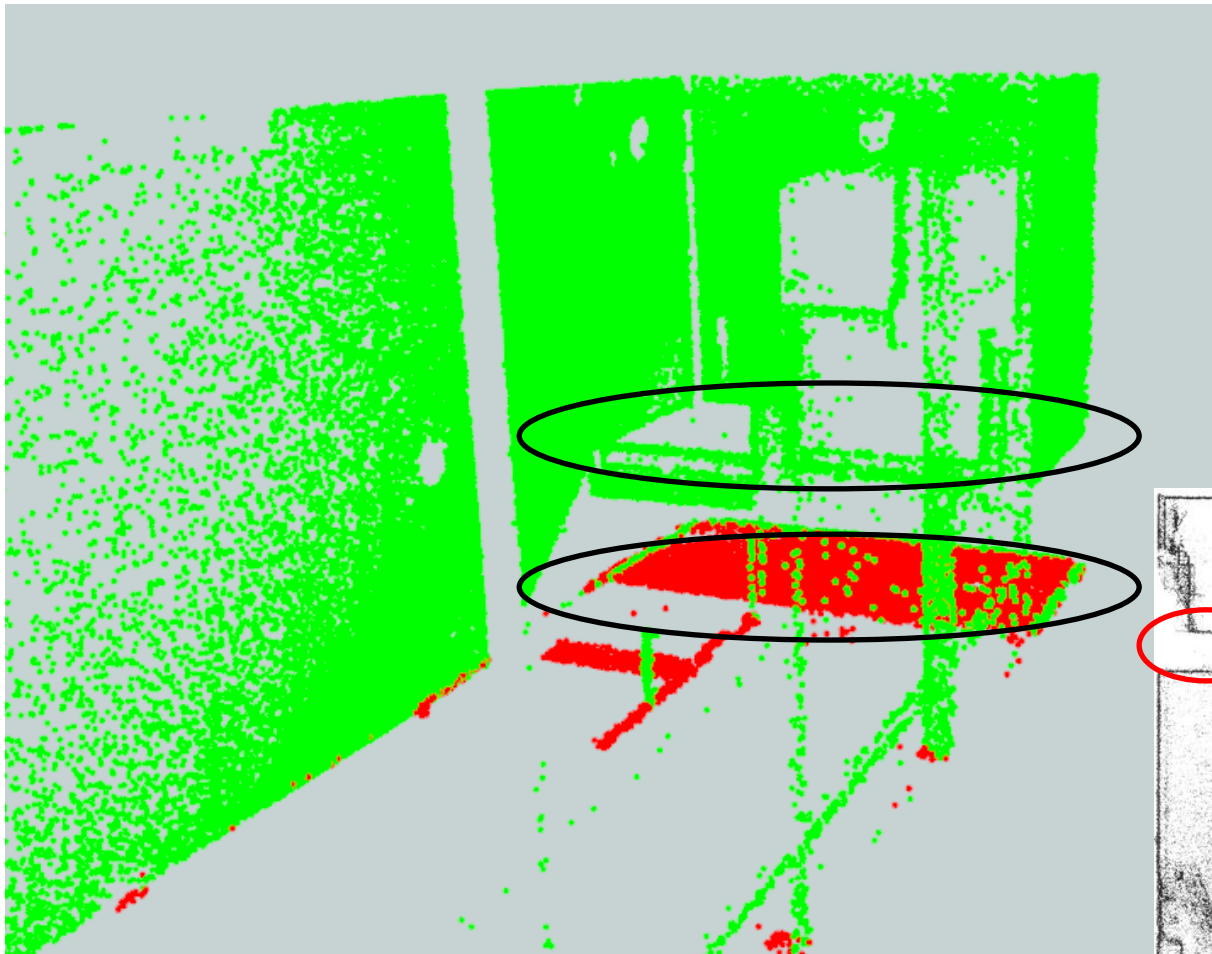
How to?

- Histograms
- Plane fitting
- Line detection

Story separation



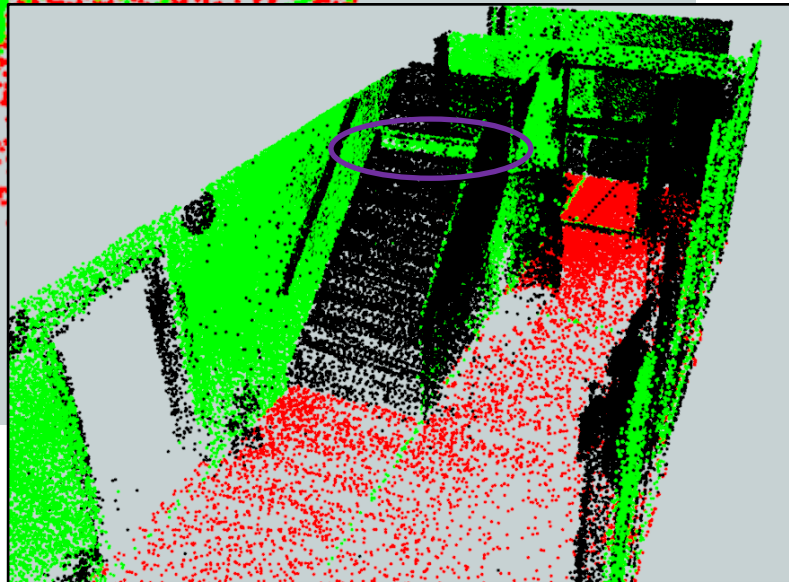
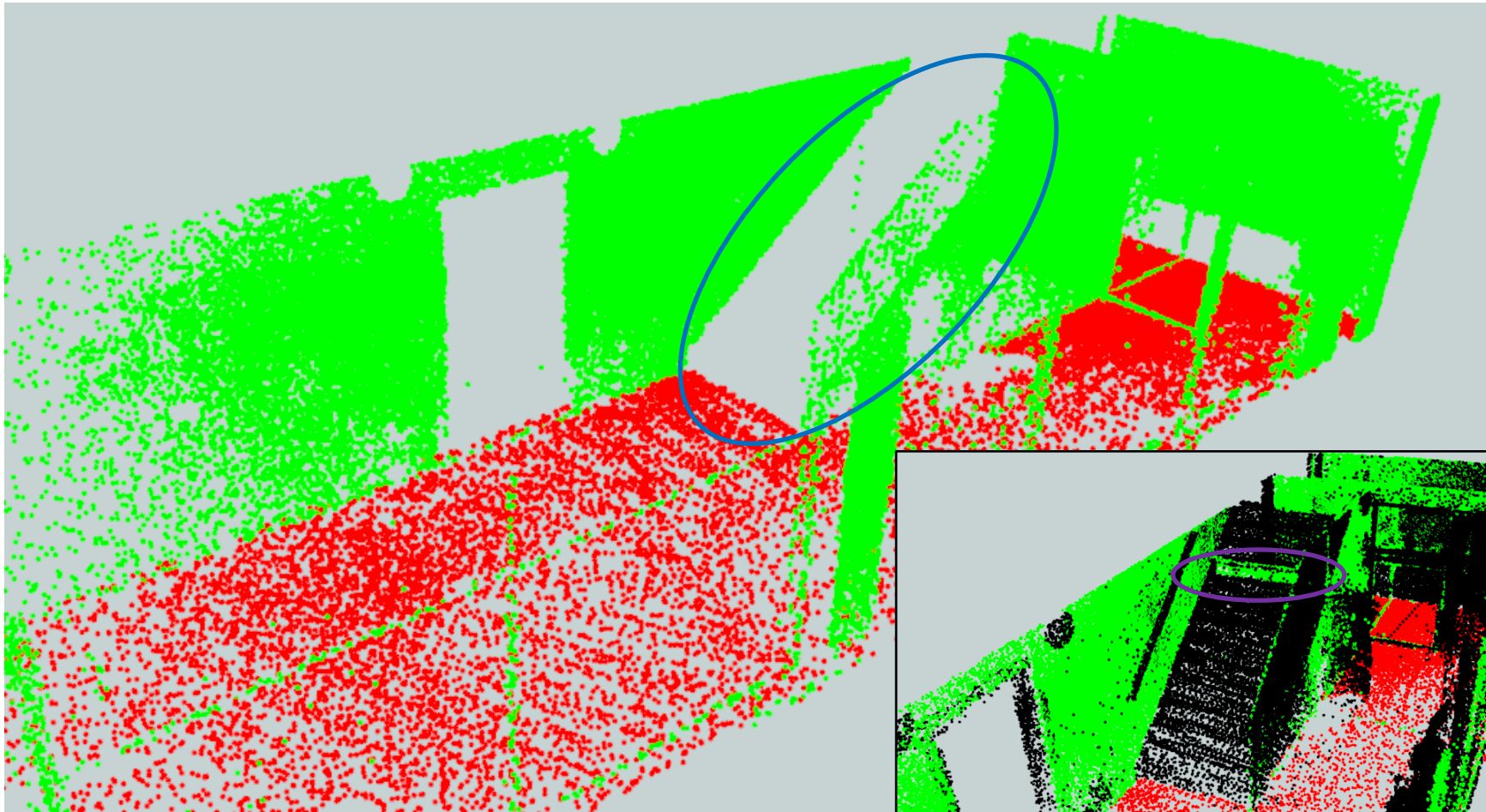
First story, problem hanging ceilings



But what if there would be a table?

- Histogram would have the same peak attributes
- To be fixed when stairs are known?

Ground story



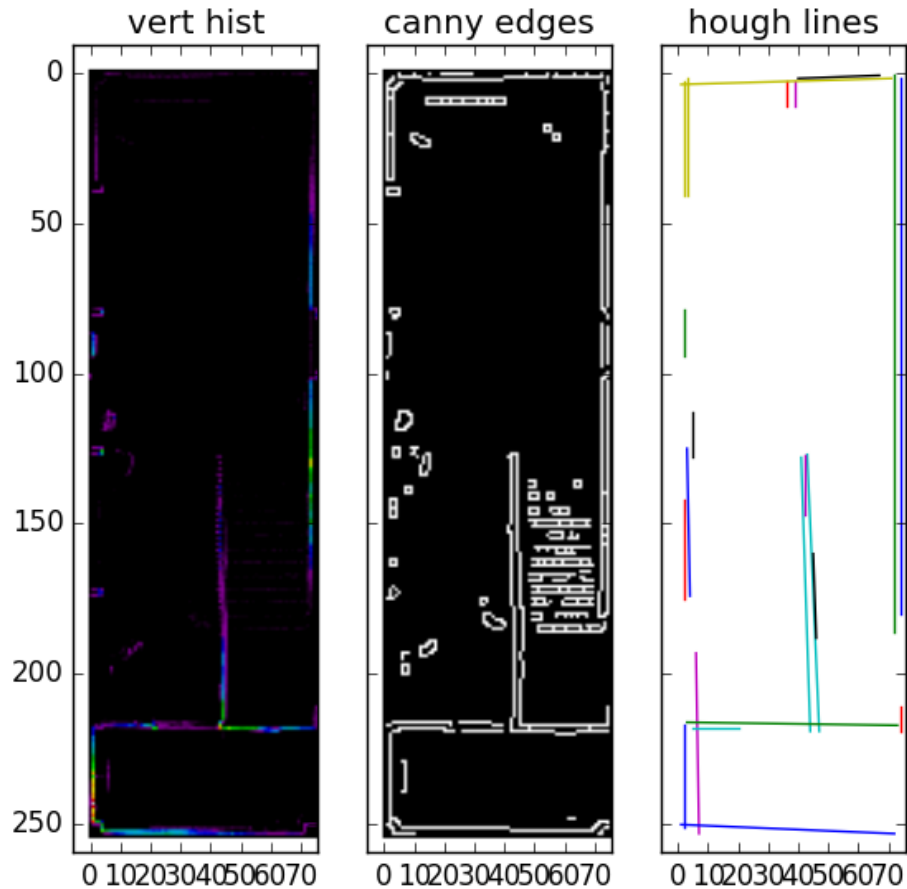
Vertical & Horizontal histograms

- According to normal direction of plane through points in octree leaf and direct neighbours

Improve wall detection

- Hough transform

point cloud cut floor 0

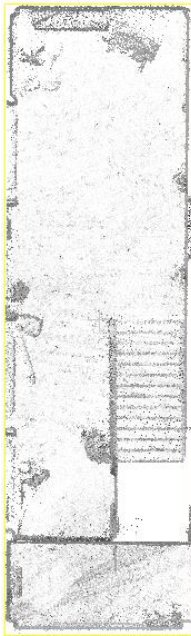


Next: project to octree, correct result of histogram method

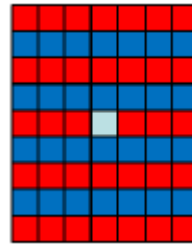
Stairs

- Matched filter for vertical & horizontal histogram

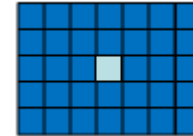
point cloud cut floor 0



stair vertical filter



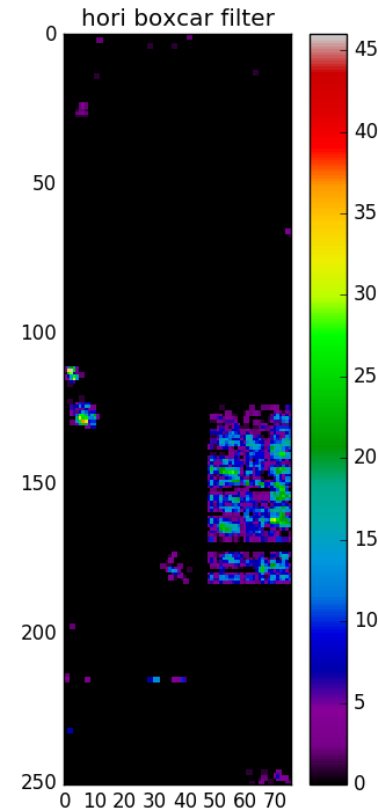
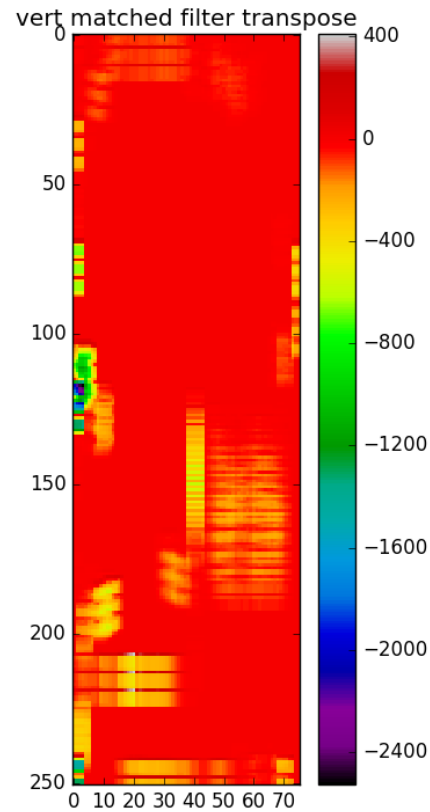
stair horizontal filter



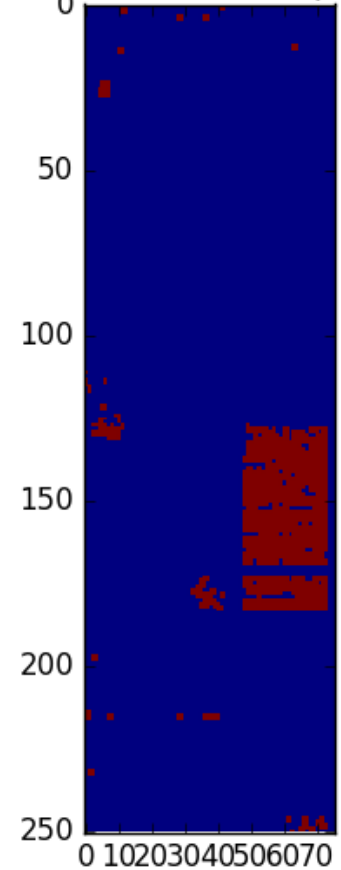
Blue=positive filter weights
Red=negative filter weights
Light blue=centre of filter

Stairs

- Filter responses



combined filter responses



Next: grow regions \square calculate slope & aspect, should link two floors

Tools

- SciPy (NumPy, Matplotlib, Scikit-image)
- PostgreSQL
- CloudCompare
- FME Workbench

References

- Bansal, M., Matei, B., Southall, B., Eledath, J., and Sawhney, H. (2011). A lidar streaming architecture for mobile robotics with application to 3d structure characterization. In Robotics and Automation (ICRA), 2011 IEEE International Conference on, pages 1803–1810.
- Broersen, T., Fichtner, F., Heeres, E., de Liefde, I., and Rodenberg, O. (2015). Project pointless. identifying, visualizing and pathfinding through empty space in interior point clouds using an octree approach. Geomatics Synthesis Project.
- Jamali, A., Rahman, A. A., Boguslawski, P., Kumar, P., and Gold, C. M. (2015). An automated 3d modeling of topological indoor navigation network. *GeoJournal*, pages 1–14.
- Khoshelham, K. and Díaz-Vilariño, L. (2014). 3D Modelling of Interior Spaces: Learning the Language of Indoor Architecture. *ISPRS - International Archives of the Photogrammetry, Remote Sensing and Spatial Information Sciences*, pages 321–326.
- Liu, L. and Zlatanova, S. (2013a). Generating navigation models from existing building data. In *Acquisition and Modelling of Indoor and Enclosed Environments 2013*, Cape Town, South Africa, 11-13 December 2013, *ISPRS Archives Volume XL-4/W4*, 2013. ISPRS.
- Oesau, S., Lafarge, F., and Alliez, P. (2014). Indoor scene reconstruction using feature sensitive primitive extraction and graph-cut. *ISPRS Journal of Photogrammetry and Remote Sensing*, 90:68 – 82.
- Okorn, B., Xiong, X., Akinci, B., and Huber, D. (2010). Toward automated modeling of floor plans. In *Proceedings of the Symposium on 3D Data Processing, Visualization and Transmission*, volume 2.